



**MADERA GEORGIA**  
giving a new life to an old wood

# MADERA GEORGIA

**GIVING A NEW LIFE TO AN OLD WOOD**



**2004 - 2024**



## HISTORY OF MADERA GEORGIA

“Madera Georgia” LTD has been operating in Georgian market since 2004. The enterprise was founded on the material and technical base of a furniture workshop of the Soviet period. Soon after its founding, the company began to enter the international market, starting with exporting to Israel. In parallel with the technical modernization of the workshop and the training of qualified personnel, the company engaged in studying international market requirements and quality standards. In this regard, “Madera Georgia” LTD constantly collaborates with internationally recognized experts and organizations in the industry.

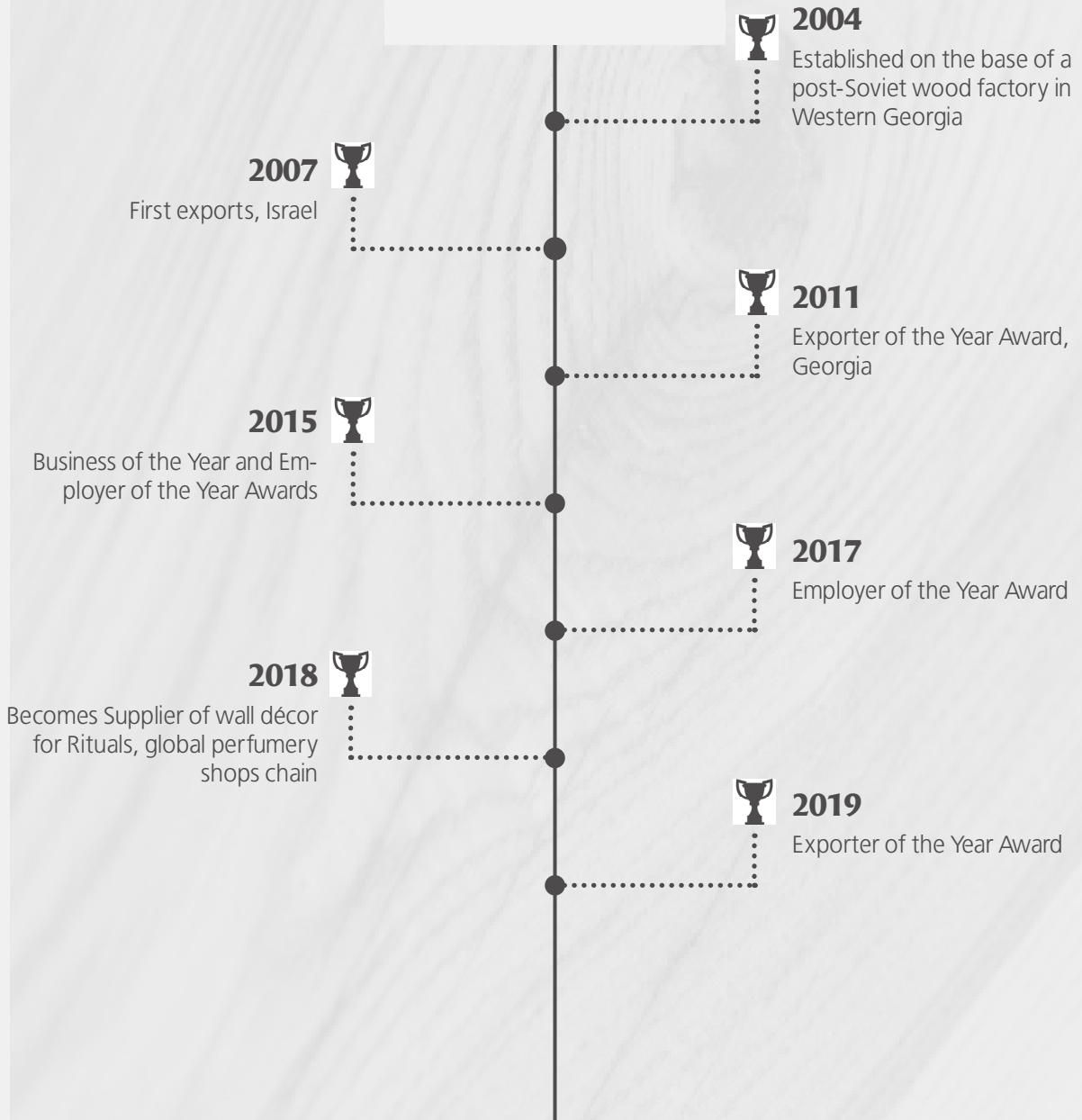
The turning point in the history of the enterprise is associated with fruitful cooperation with specialists of the International Organization for Business Development and Support - “PUM” in 2016, which contributed to greater recognition and growth in popularity of the enterprise’s products in European market.

## MADERA GEORGIA TODAY

Today Madera Georgia produces all types of exclusive solid wood furniture, except for upholstered furniture. The production uses aged wood material of the highest quality, which is distinguished by uniqueness and environmental friendliness. The growing and ever-modernizing material and technical base of the company is focused on safe and environmentally friendly production methods. The company is massively represented by its products in Europe, USA, and Israel.

## MADERA GEORGIA GOALS

Madera Georgia plans to expand its product line and add several new services in the near future. The goal of the management is to combine traditional methods of wood processing and modern market standards in the country, develop and popularize the sector, minimize waste generated during the production process, widely implement international standards to minimize harmful effects on the environment and expand and strengthen position in the international market.



## OUR PARTNERS



## Spectroscopic recognition and age dating analysis of wood samples

### Procedure:

the wood samples, few milligrams taken from the inner part of the wood, previously subject to a microscopic check in order to verify the suitability, have been analyzed in FT-IR spectroscopy using a Perkin-Elmer spectrophotometer (Spectrum 100), with a resolution of 4 cm<sup>-1</sup> and no. 16 scans. The obtained spectra in Absorption have been printed in the following range of wave numbers: 450 cm<sup>-1</sup> and 1900 cm<sup>-1</sup> where the most significant absorptions appear. The spectra obtained by the analyzed samples have been compared with the references of our data bank in order to calculate the age of wood.

### Samples:

No. 3AZ-10661 - The samples come from the following object: wooden panels "A samples" sent and tested by the order of Madera Georgia LTD – Kutaisi, Georgia.

No. 3AZ-10662 - The samples come from the following object: wooden panels "B samples" sent and tested by the order of Madera Georgia LTD – Kutaisi, Georgia.

### Analyses performed by:

Scientific laboratory, Museo d'Arte e Scienza, Milan – Italy, who took the samples at the points indicated in the attached photo

### Results:

No. 3AZ-10661 - Age of wood: 300 +/- 30 years. Type of wood: oak

No. 3AZ-10662 - Age of wood: 290 +/- 30 years. Type of wood: oak

Laboratorio scientifico del  
Museo d'Arte e Scienza  
via Quinto Sella, 4  
20122 Milano







## SAW SHARPENING SERVICES

Welcome to the sharpening services that ensures tool sharpness. If you are not sure whether it is worthwhile to sharpen your saw or drill blades, contact us.

Good lubrication extends tool usefulness and reduces wear and tear. Keep your saw fresh and save money. We will breathe a new life into your instrument.

Brings new lives to your tools.

### WE OFFER SERVICES TAILORED TO YOUR WISHES

- Circular Saw Blades
- Jointer Plane Blades
- Band Saw Blades

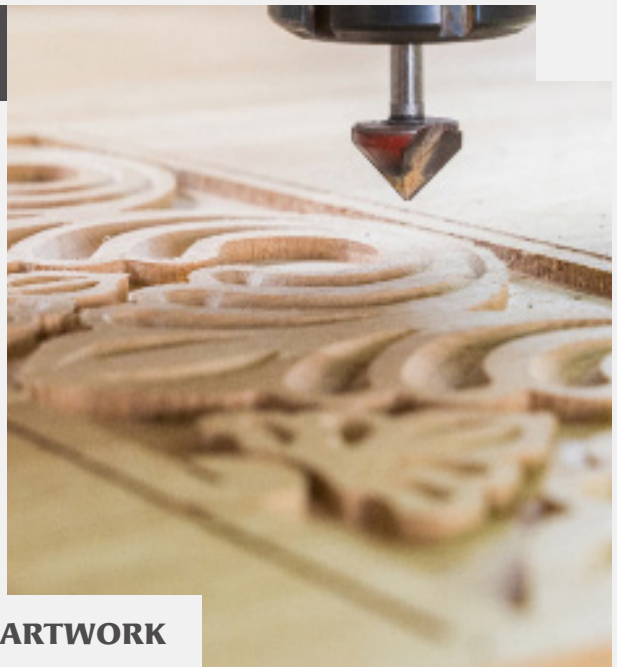
- Steel Cutting Blades
- Splitting Saw
- Hand Saw Blades

- Narrow Band Saws
- Industrial Stainless Steel Knife Blades
- Chipper Blades

## CNC ROUTING SERVICES

Our most modern machinery, a CNC milling machine, allows us to cut efficiently and with maximum accuracy. The machine can be used to drill, engrave, 3D cut on materials such as wood, plastic, etc. Dimensions 210 cm X 270 cm and 8 cm thickness.

We collaborate on creative projects - wherever you are, we will help you, from an idea to the final result. If you need one type of product or several different parts for continuous production, we can meet at the specified time and negotiate.



### USE, MATERIALS AND ARTWORK

- Architectural Elements / Moldings
- Doors / Details
- Decorative Panels / Screen Protector
- Furniture

- Projection Cutting / engraving
- Reproduction
- Toys / Print Writing / Frames
- Woodworking

- Materials: Plywood, MDF, All Woods
- Working Files: .DXF .DWG .CDR .STL & 3D formats



## MATERIALS

The company buys unfit for living, dilapidated wooden buildings throughout Georgia

Specialists of Ltd „Madera Georgia“ do the dismantling themselves in order to transport all the details to the enterprise without damage.

The enterprise uses old wood, cut 100-200 years ago, to make its products.

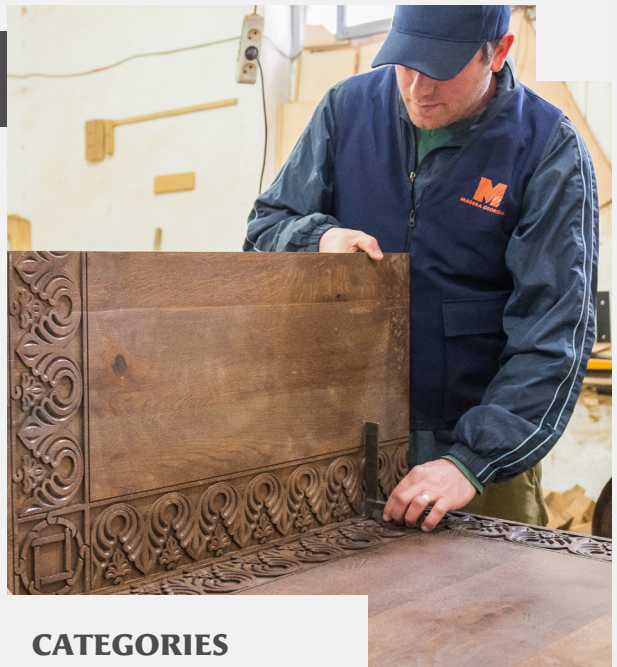
### Extraction of raw materials and its properties

The mentioned material has gone through the natural process of wood aging, during which, for decades, meteorological conditions, as well as human influence and other environmental factors acted on it.

## WOODWORK

Reusing wood is a proven and well-implemented method around the world. The raw material allows unlimited use in almost all areas of wood products, starting with household and office furniture, ending with floor coverings and wall decor.

After the introduction of raw materials, they are sorted by categories, cleaned of metal, which interferes with the processing of raw materials on the machines.



### CATEGORIES

According to the categories, the furniture, flooring, decor and other products to be made from it are determined according to the design. The main export products are wall decor, in which the smallest details are used, which helps to minimize the amount of raw material waste.



# PPROJECTS

MADERA GEORGIA





## COSMETIC STORE "RITUALS..."

Europe, United States of America, Asia  
Present: Wood Wall Decor  
Material: Wood

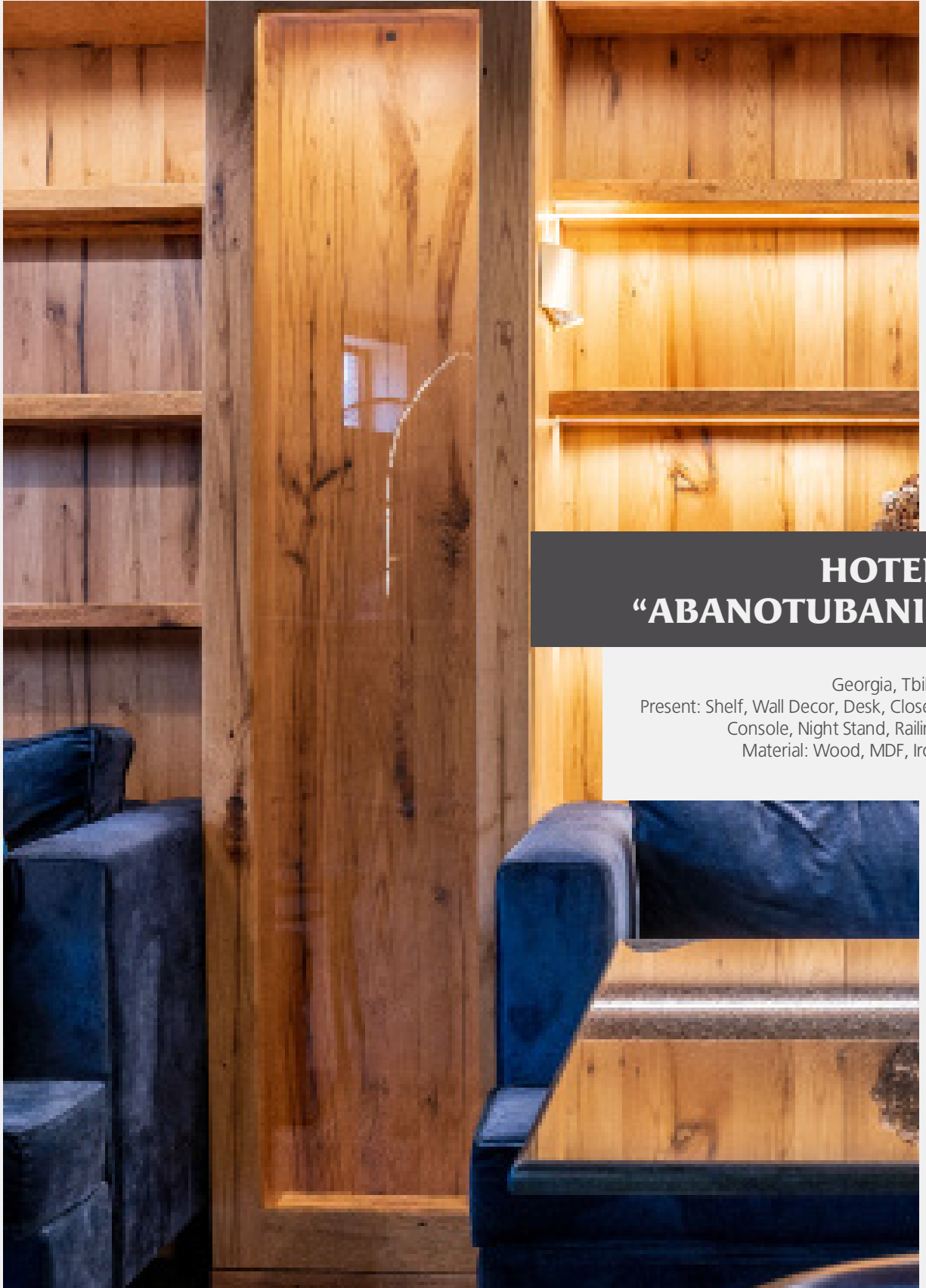




PHOTO GALLERY

COSMETIC STORE  
"RITUALS..."





## **HOTEL “ABANOTUBANI”**

Georgia, Tbilisi  
Present: Shelf, Wall Decor, Desk, Closet,  
Console, Night Stand, Railing  
Material: Wood, MDF, Iron





**PHOTO GALLERY**

**HOTEL  
“ABANOTUBANI”**

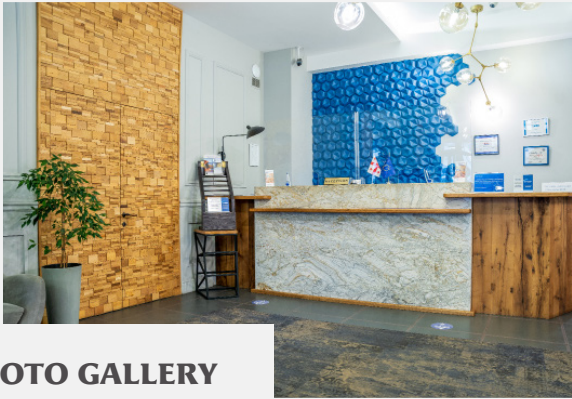






**HOTEL**  
**“BEST WESTERN”**

Georgia, Tbilisi  
Present: Table, Bar Table, Wine Wall, Shelf  
Material: Wood, Iron



**PHOTO GALLERY**

**HOTEL  
"BEST WESTERN"**

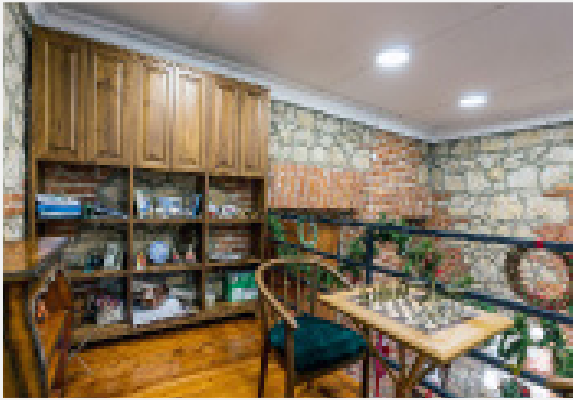




## SCHOOL “GHONE KVEKNISA”

Georgia, Tbilisi  
Present: Table, Bar Table, Wine Wall, Shelf  
Material: Wood, Iron





**PHOTO GALLERY**

**SCHOOL  
"GHONE KVEKNISA"**





## ORGANIZATION “SOCIAL HOUSE”

Georgia, Tbilisi  
Present: Bookshelf  
Material: Wood, MDF

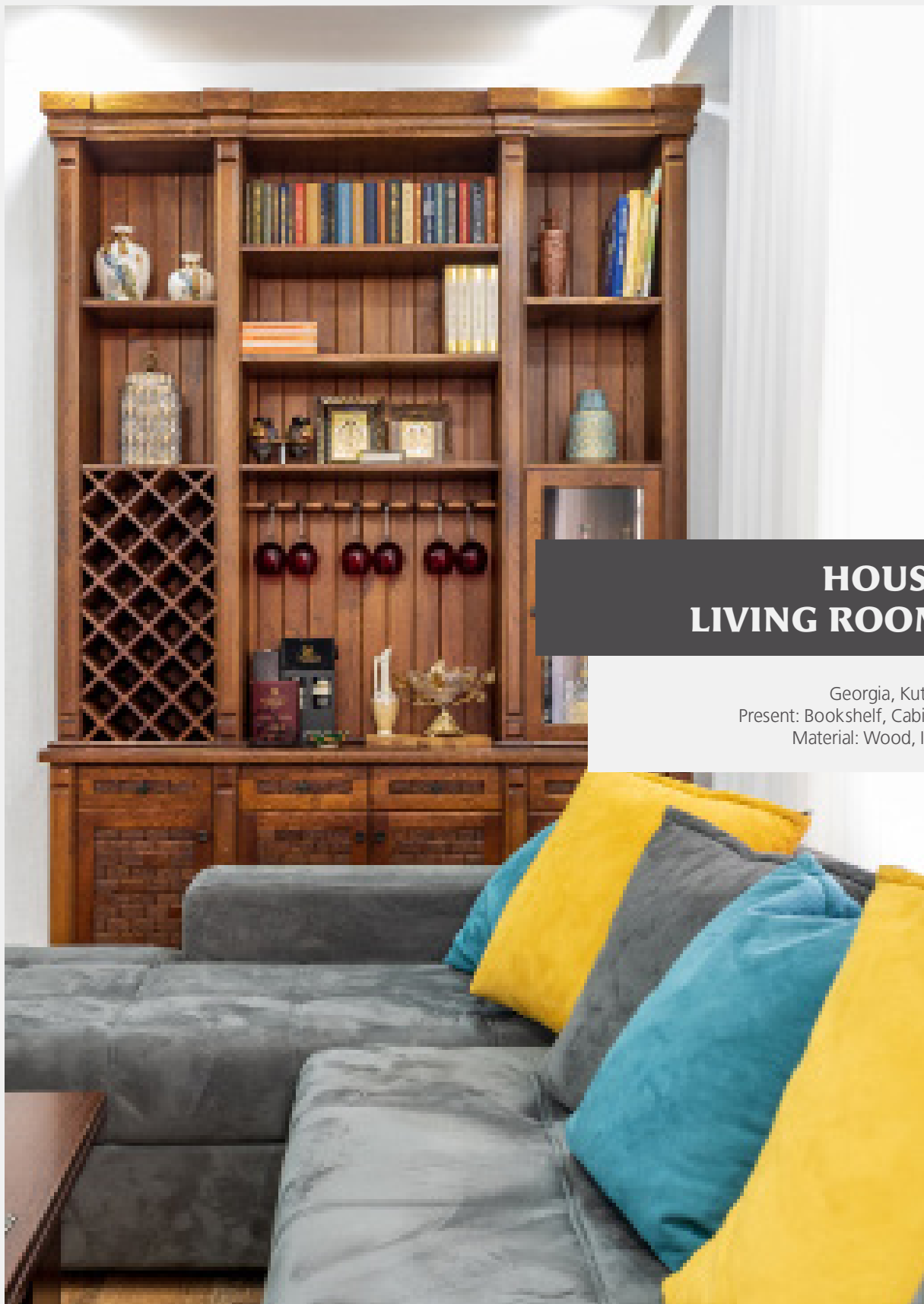




**PHOTO GALLERY**

## **ORGANIZATION “SOCIAL HOUSE”**





## HOUSE LIVING ROOM

Georgia, Kutaisi  
Present: Bookshelf, Cabinet  
Material: Wood, Iron

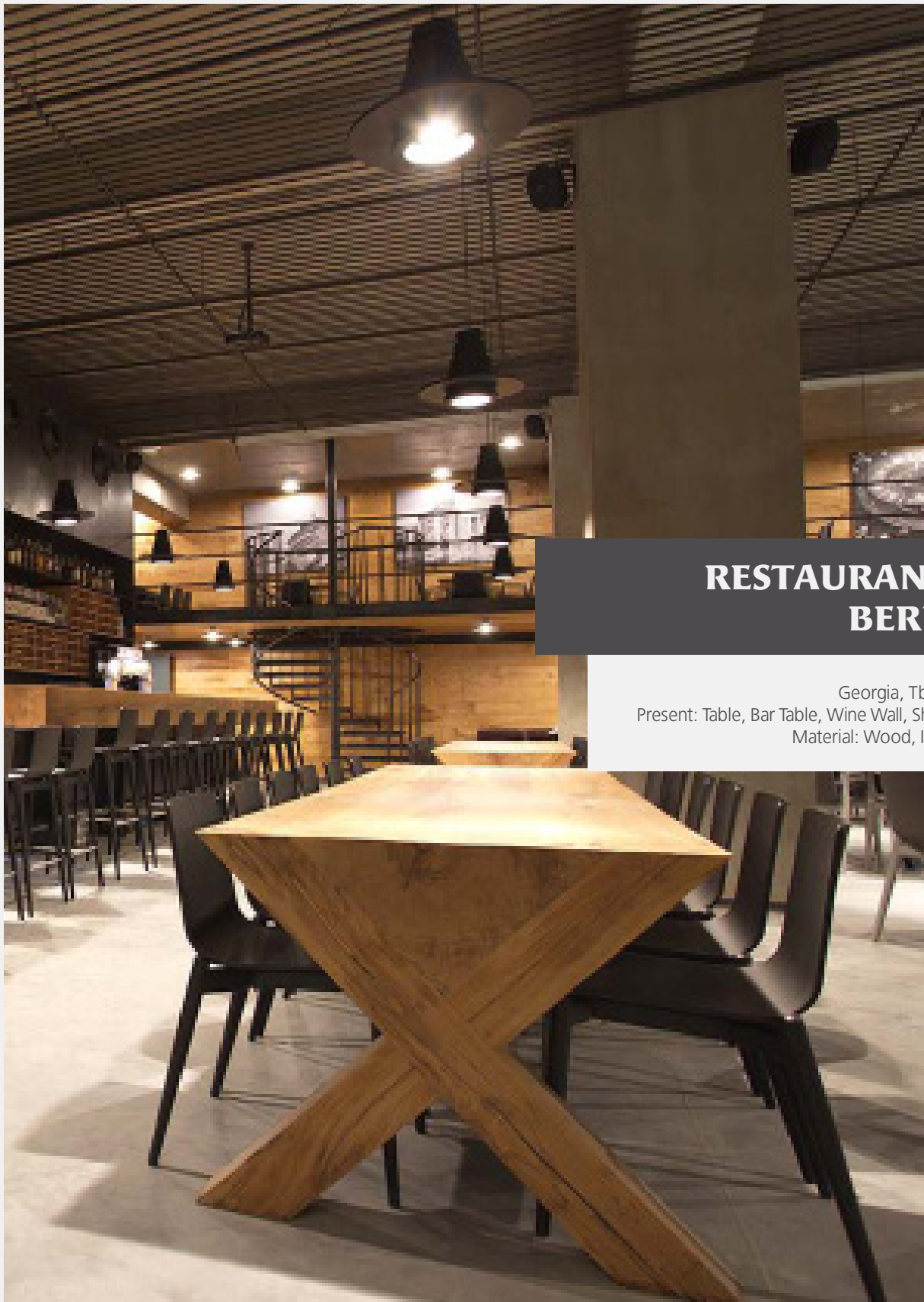




**PHOTO GALLERY**

## **HOUSE LIVING ROOM**





## RESTAURANT BERN

Georgia, Tbilisi  
Present: Table, Bar Table, Wine Wall, Shelf  
Material: Wood, Iron



**PHOTO GALLERY**

## **RESTAURANT BERN**







## HOUSE LIVING ROOM

Georgia, Tbilisi  
Present: Bookshelf  
Material: Wood



**PHOTO GALLERY**

**HOUSE  
LIVING ROOM**

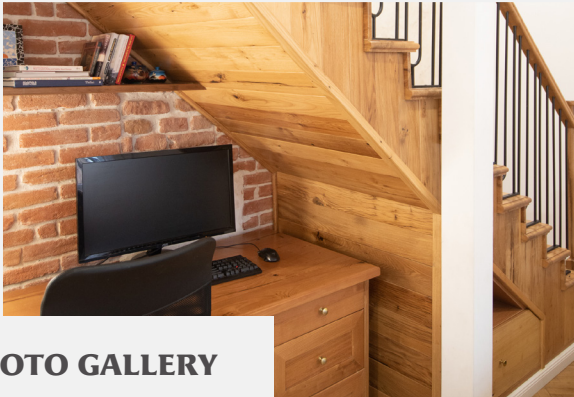




## HOUSE LIVING ROOM

Georgia, Tbilisi  
Present: Kitchen, Floor, Cabinet  
Material: Wood / MDF





**PHOTO GALLERY**

**HOUSE  
LIVING ROOM**







## HOUSE CELLAR HALL

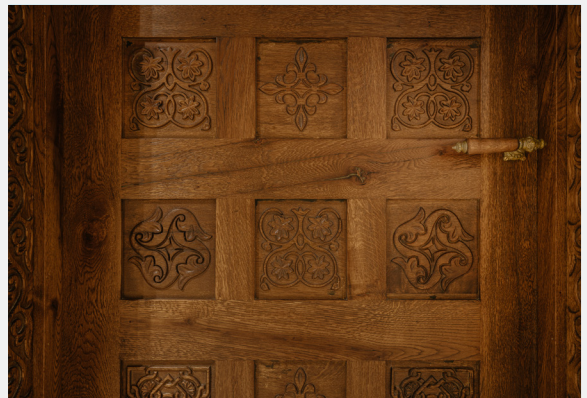
Georgia, Tbilisi  
Present: Table, Door, Shelf, Ceiling  
Material: Wood





**PHOTO GALLERY**

**HOUSE  
CELLAR HALL**





# PRODUCTS

MADERA GEORGIA





### **LOUVRE** PARQUET

Edged Block:  
W/L 70x70mm - 100x100mm - T 20mm  
Reclaimed Wood Weathered Top  
Reclaimed Wood Planed Layer  
Price: 100 € - m2



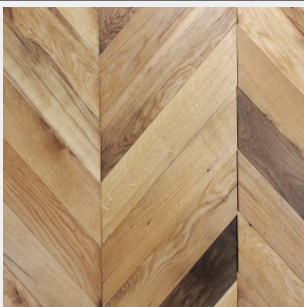
### **VERSAILLES** PARQUET

Edged Block:  
W/L 70x70mm - 100x100mm - T 20mm  
Reclaimed Wood Weathered Top  
Reclaimed Wood Planed Layer  
Price: 100 € - m2



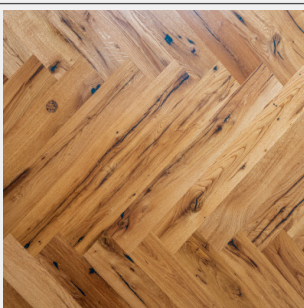
### **HARDWOOD FLOORING** PARQUET

Edged Block:  
W/L 70x70mm - 100x100mm - T 20mm  
Reclaimed Wood Weathered Top  
Reclaimed Wood Planed Layer  
Price: 100 € - m2



### **CHEVRON** PARQUET

Edged Block:  
W/L 70x70mm - 100x100mm - T 20mm  
Reclaimed Wood Weathered Top  
Reclaimed Wood Planed Layer  
Price: 100 € - m2



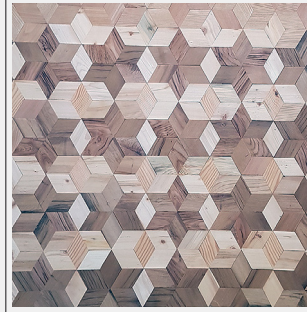
### **HERINGBONE** PARQUET

Edged Block:  
W/L 70x70mm - 100x100mm - T 20mm  
Reclaimed Wood Weathered Top  
Reclaimed Wood Planed Layer  
Price: 100 € - m2



**BRICK WALL**  
DECOR

Edged Block:  
W/L 100x100mm  
T 18/20mm  
Price: 100 € - m2



**DICE TILE**  
DECOR

Edged Block:  
W/L 100x100mm  
T 18/20mm  
Price: 100 € - m2



**CUBE TILE**  
DECOR

Edged Block:  
W/L 100x100mm  
T 18/20mm  
Price: 100 € - m2



**HEXAGON TILE**  
DECOR

Edged Block:  
W/L 100x100mm  
T 18/20mm  
Price: 100 € - m2



**BUTTON TILE**  
DECOR

Edged Block:  
W/L 100x100mm  
T 18/20mm  
Price: 100 € - m2



**DIAMOND TILE**  
DECOR

Edged Block:  
W/L 100x100mm  
T 18/20mm  
Price: 100 € - m2



**PYRAMID TILE**  
DECOR

Edged Block:  
W/L 100x100mm  
T 18/20mm  
Price: 100 € - m2



**QUILT TILE**  
DECOR

Edged Block:  
W/L 100x100mm  
T 18/20mm  
Price: 100 € - m2



**Giving a new life to an  
old wood..**

## **CONTACT US**

E-mail: [info@maderageorgia.ge](mailto:info@maderageorgia.ge)

Phone: +995597709090

Web: [www.maderageorgia.ge](http://www.maderageorgia.ge)

